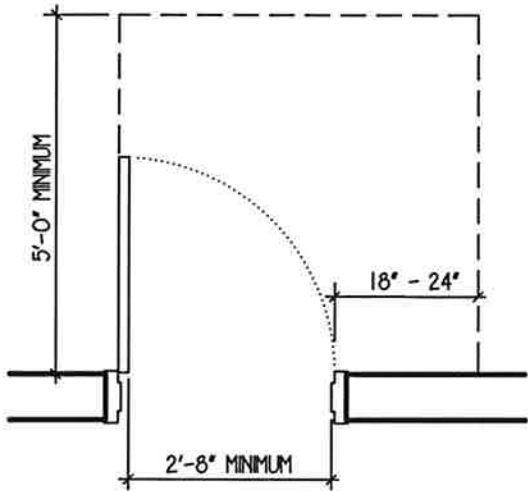
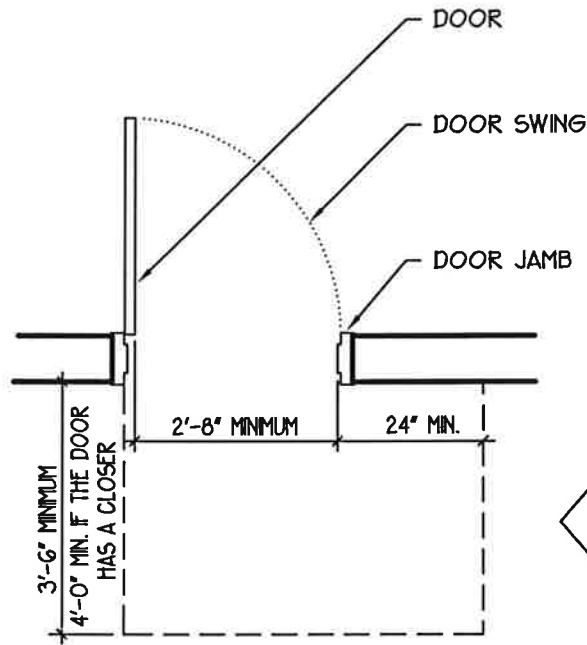
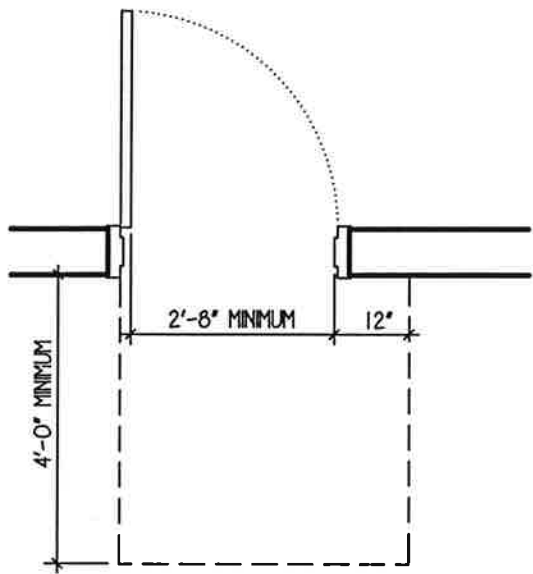
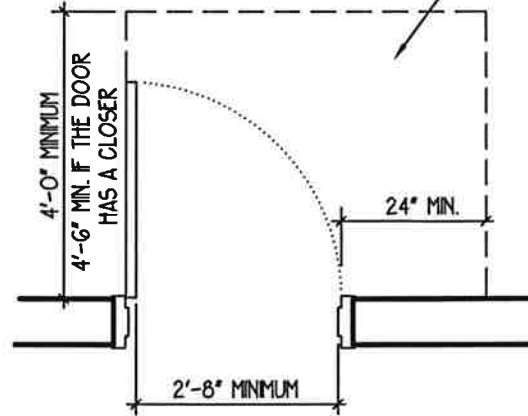


↓  
WHEN APPROACHING FROM THE FRONT



THERE SHOULD BE NO OBSTRUCTIONS WITHIN THE DASHED AREAS

←  
WHEN APPROACHING FROM THE SIDE

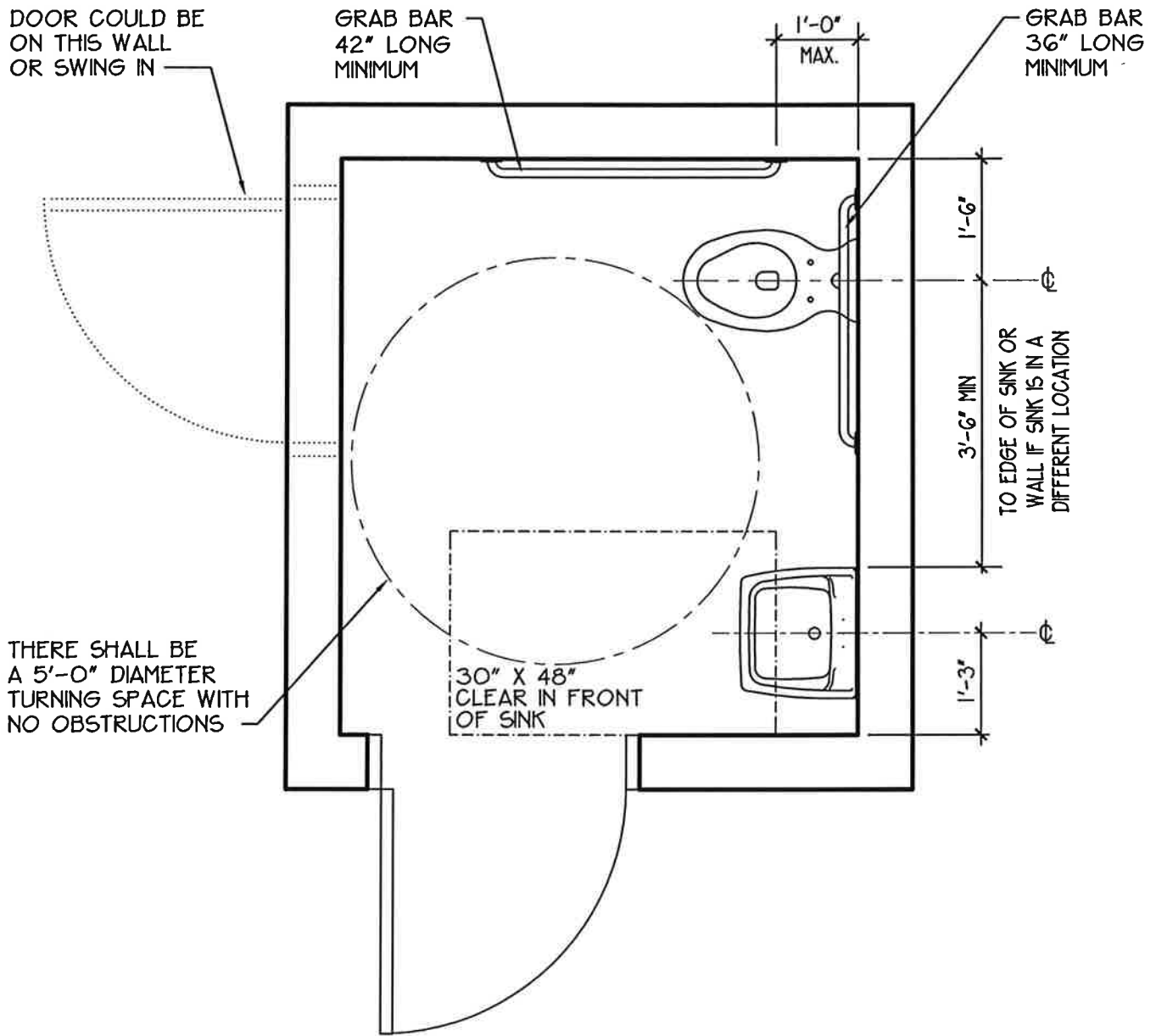


←  
WHEN APPROACHING FROM THE SIDE

↑  
WHEN APPROACHING FROM THE FRONT

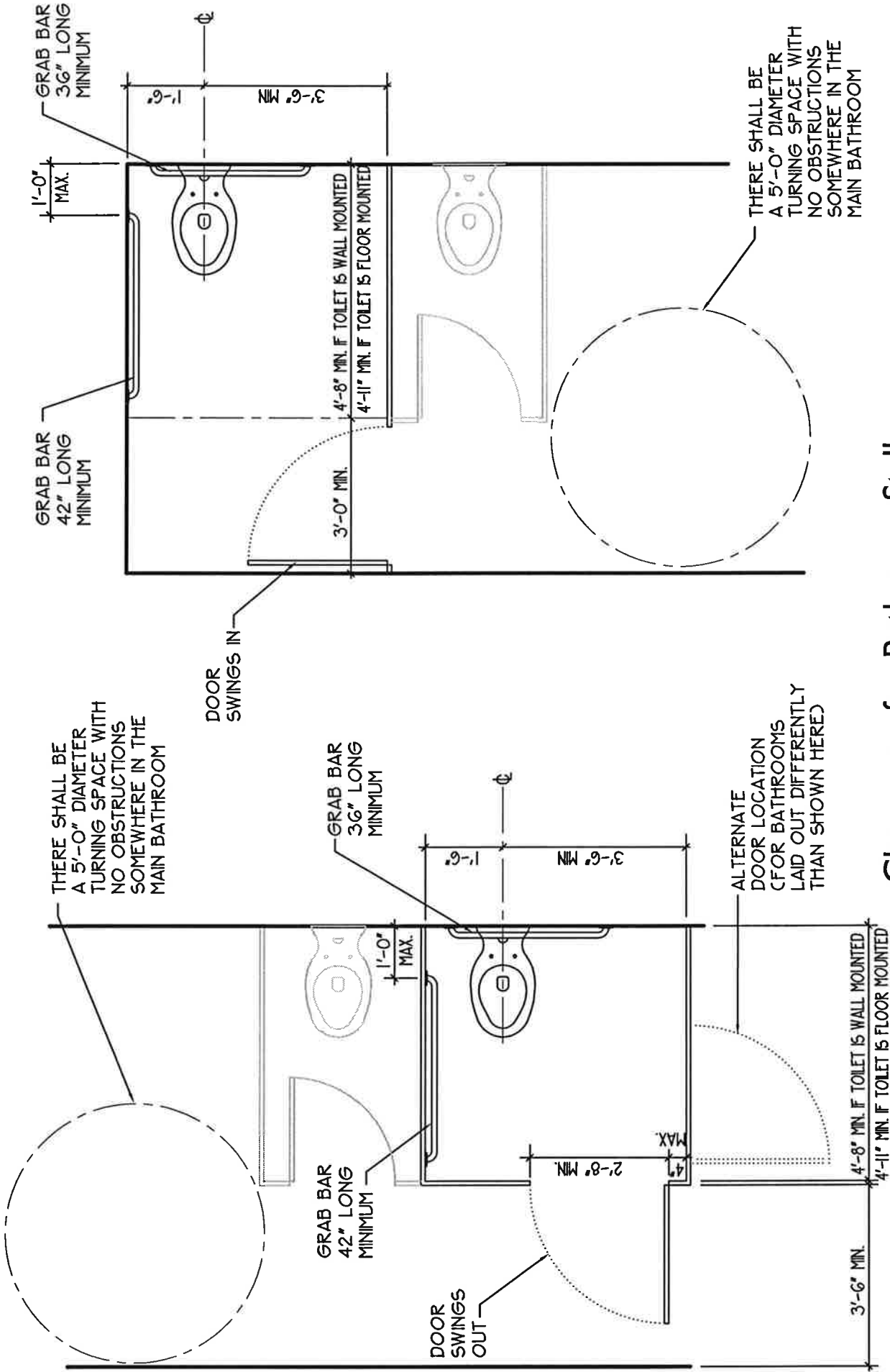
- THE BUILDING CONFIGURATION MAY CAUSE YOU TO APPROACH A DOOR FROM THE SIDE OR FROM THE FRONT. DIMENSIONS VARY BASED ON THAT. YOU MAY HAVE TO MAKE A JUDGEMENT CALL WHICH YOU HAVE.
- THE DOOR "KNOB" SHOULD BE LEVER TYPE

## Clearances Needed at ADA Doors



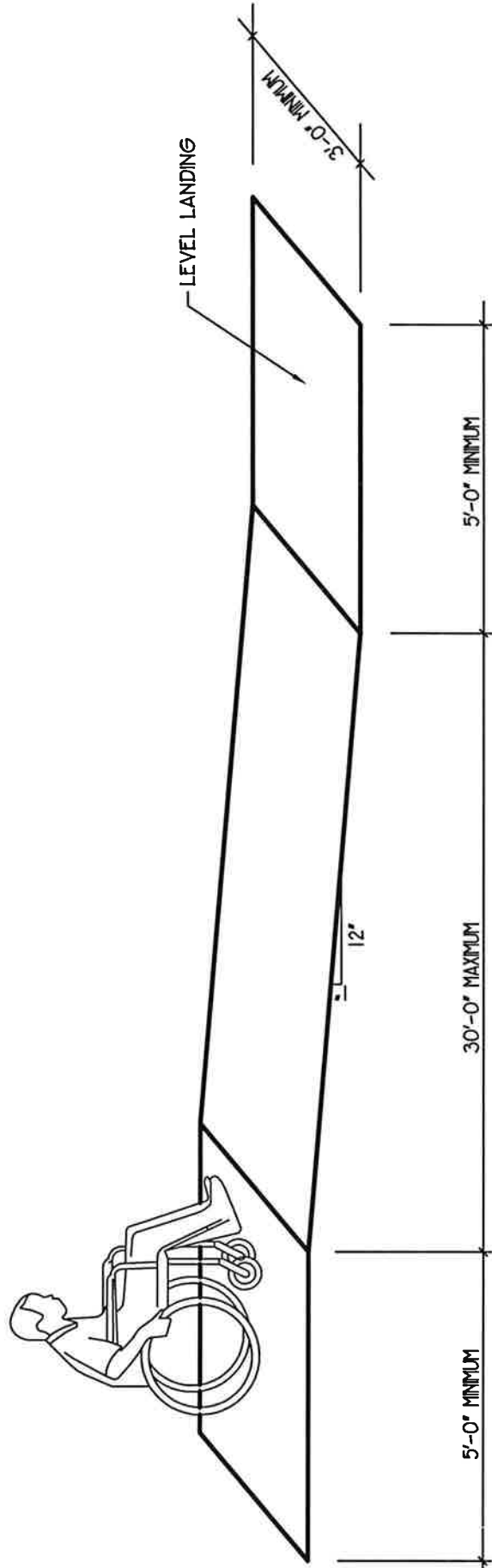
## Clearances for a Single Occupant Bathroom

- HEIGHT SHOULD BE 17" TO 19" MEASURED FROM THE FLOOR TO THE TOP OF THE TOILET SEAT
- LOCATION OF BATHROOMS MUST BE ALONG AN ACCESSIBLE ROUTE - NO STAIRS OR CURBS.
- CONFIGURATIONS OF BATHROOMS CAN VARY AND DIFFER FROM WHAT IS SHOWN HERE



## Clearances for Bathroom Stalls

- HEIGHT SHOULD BE 17" TO 19" MEASURED FROM THE FLOOR TO THE TOP OF THE TOILET SEAT
- LOCATION OF BATHROOMS MUST BE ALONG AN ACCESSIBLE ROUTE - NO STAIRS OR CURBS.
- CONFIGURATIONS OF BATHROOMS CAN VARY AND DIFFER FROM WHAT IS SHOWN HERE



- THERE MUST BE A FLAT LANDING AT THE TOP AND BOTTOM OF THE RAMP
- THE LANDINGS MUST BE AT LEAST AS WIDE AS THE RAMP
- THE RAMP CANNOT BE TOO STEEP. THE MAXIMUM SLOPE IS 1:12, MEANING THE RAMP SHOULD NOT RISE MORE THAN ONE INCH FOR EVERY TWELVE INCHES OF LENGTH

## Ramps